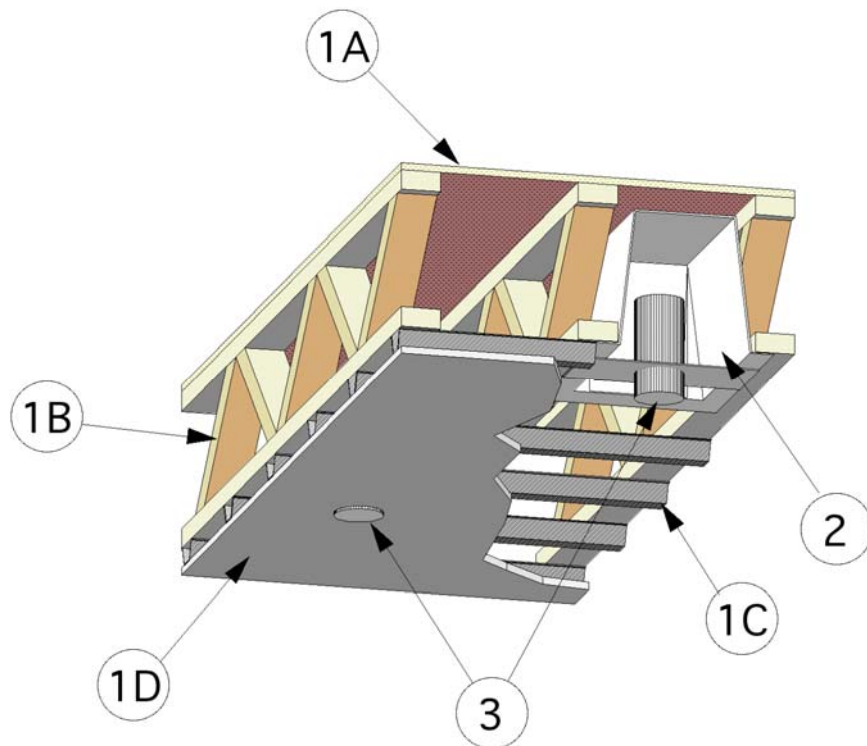


---

Design Number FRPS/FME 60-02  
NON LOAD BEARING FLOOR / CEILING  
Fire Rated Product Specialties Corp  
FRPS Fire Rated Enclosures:  
FN-Z-12-20-9 and FN-Z-12-20-9-SEA FIRE RATED ENCLOSURES  
FN-Z-12-20-9-EXH, FIRE RATED ENCLOSURE  
FN-Z-14-14-3, FIRE RATED ENCLOSURE  
ASTM E 119  
F Rating: 1 Hour

---



1. FLOOR CEILING ASSEMBLY:  
Constructed in the manner as specified below:

A. Plywood subfloor: Nominal 23/32 inch thick interior grade plywood with tongue-and-groove edges along the 8 foot sides. Long dimension of panels, or face grain of plywood, to be perpendicular to trusses with joints staggered. Plywood is secured to top side of truss assembly (Item 1B) with No.

6d common nails spaced maximum 12 inches OC.

B. Trusses: Parallel chord trusses spaced a maximum of 24 inches OC fabricated of nominal 2 inches x 4 inches lumber with lumber oriented vertically or horizontally. Truss members are secured with No. 20 MSG galvanized steel truss plates.

C. Resilient Channels: Formed from nominal 26 GA galvanized steel, spaced 16 inches OC and applied

perpendicular to the trusses. Channel is secured to the trusses with 1-1/4 inches long steel wood screws. Channel overlapped at splices a minimum of 4 inches. Channel is removed in locations where the recessed light cover (Item 2) is located.

D. Gypsum Wallboard: Nominal 5/8 inch Type X gypsum wallboard is secured to the underside of the resilient channel (Item 1C) with 1 inch long wallboard screws spaced max 12 inches OC and located 1-1/2 inches from side and end joints. Apply vinyl or casein, dry or premixed joint compound to face layers of gypsum wallboard in two coats to all exposed fastener heads and gypsum wallboard joints. A minimum 2 inch wide paper, plastic, or fiberglass tape is embedded in first layer of compound over joints in gypsum wallboard.

2. CERTIFIED MANUFACTURER: Fire Rated Product Specialties Corp

CERTIFIED PRODUCT: Formed Metal Fabrications

MODEL: FRPS Fire Rated

Enclosures: FN-Z-12-20-9, FN-Z-12-20-9-SEA, FN-Z-12-20-9-EXH, and FN-Z-14-14-3

RECESSED LIGHT COVER: Constructed of nominal 24 GA galvanized steel and having nominal dimensions 20 inch long x 12 inch wide x 9-1/2 inch deep and having nominal 2-1/2 inch wide flanges. Position the box inverted and recessed into the floor cavity. Secure the flanges of the box to the underside of the truss assembly (Item 1B) with No. 6, 1-1/4 inch long bugle head screws spaced at pre-drilled locations on the flanges. The boxes may be installed in the floor with the following provisions:

- Maximum 2 fixtures within 36 square foot area.

- Minimum OC fixture spacing of 24 inches within same truss cavity.
  - Minimum center-to-center fixture spacing of 34 inches for adjacent truss cavities.
3. RECESSED LIGHT FIXTURE: Standard canister-style recessed light assembly installed in accordance with manufacturer's instructions. Standard 3C-12AWG "Romex" wire is fixed to the assembly and exits the recessed light cover (Item 2) through a maximum of two openings.
4. FIRESTOP SEAL: (Not shown) Apply a bead of firestop fill void or cavity material\*\* around the power supply wire where it exits the recessed light cover (Item 2).(\*\*Listed with Intertek).